

Safety Department

Annual update

4/22/21





Our goal

*Deliver a safe
passenger
experience*

Today we'll review

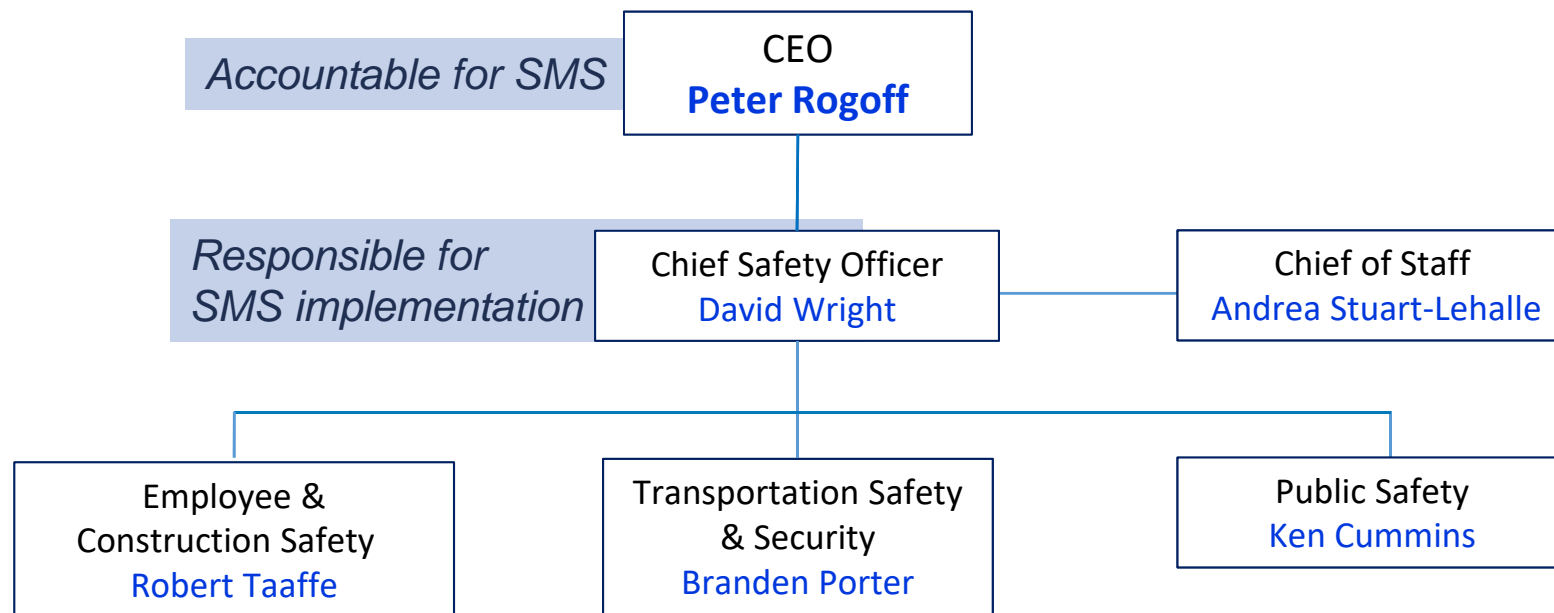
- Design for growth organizational changes
- 2020 Passenger Experience Survey results
- Public safety
- Transportation Safety and Security
- Risk mitigation - Point Defiance Bypass
- COVID-19 safety response
- Employee Health and Safety
- Construction Safety

Note: No Board action needed for the information described today.



Organizational change

Safety Department structure & divisions



A photograph of a person wearing a yellow cap, a black face mask, and a plaid shirt, standing at a transit station. They are holding a blue transit card to a yellow and blue fare reader. The background shows other people and station infrastructure, all overlaid with a blue tint. The text "Passenger experience" is written in white, italicized font across the center of the image.

Passenger experience

2020 Passenger Experience Survey

Activity #5 questions (Safety)

- How can Sound Transit can **improve feelings of personal safety** at our stations, platforms and bus stops?
- How can Sound Transit Security **better support passengers' journeys**?



2020 Passenger Experience Survey, cont.



Cleanliness
(48 mentions)

Feedback: Areas of passenger concern

- Actions or behaviors of **other passengers**
- Actions of **other people (non-passengers)**
- **Conditions of transit facilities** and vehicles
- **ST Security/staff** presence
- **COVID-19** measures



Access
(20 mentions)



Lighting
(18 mentions)

A photograph of a person from behind, wearing a dark uniform with a reflective strip and the words "TRANSIT SECURITY" printed in large, light-colored letters on the back. The person is holding a radio to their ear. The entire image is overlaid with a semi-transparent blue filter. The text "Public safety" is written in a white, italicized font across the center of the image.

Public safety

2020 Security incidents

	2019	2020
Assault	75	126
Vandalism	981	1,253
Biohazard	2074	2,151
Medical	770	692
NDR/ Loitering	3928	5,013

* Red background indicates increase over 2019

Insights:

- **Assaults** are most common crime against individuals
- **Assaults** very low in number
- **Biohazards** and **vandalism** spike in Q2 2020
- Most calls: **Non-destination Riders/loiterers**

Passenger safety highlights

COVID-19 response:

- Mask distribution on vehicles, at stations, through partner agencies
- Communication to public
- Masks in every car (Sounder & Link)
- Signage & station announcements
- Clear protocol for interventions
- Federal mask mandate February 2021
- Current compliance averaging at 98%





***Transportation Safety &
Security***

TSS: Centralizing Safety and Security Risk

Design



Safety and Security Certification

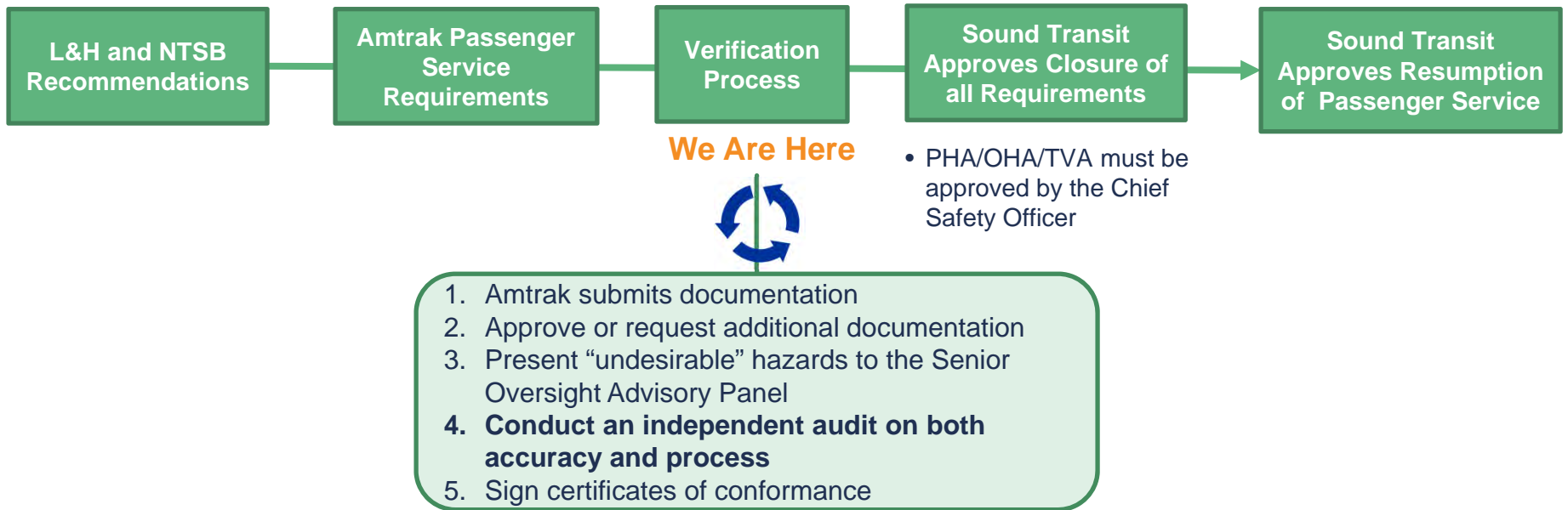


Operational Environment



PDB Safety Certification Process Overview

Safety drives review and approval of documentation and resumption of service



Point Defiance Bypass Safety Measures

- *Positive train control (PTC)*
- *PTC cut-out protocol*
- *Step down speed*
- *Additional signage*
- *Crew focus zone*
- *Training enhancements*
- *Emergency responder training*



2020 Collision data

2019 comparative

(Service)	2019		2020	
	Pedestrian	Vehicle	Pedestrian	Vehicle
ST Express	2	14	4	10
Link	5	12	3	4
TLink	0	2	0	0
Souder	4	3	4	1

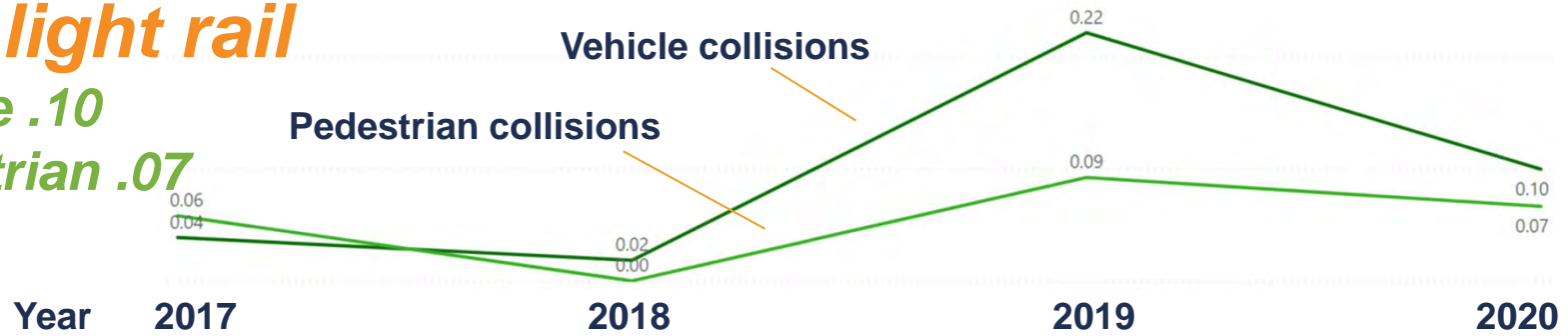


2020 Collisions, rate per 100,000 VRMs

Link light rail

Vehicle .10

Pedestrian .07



Tacoma Link

Vehicle .00

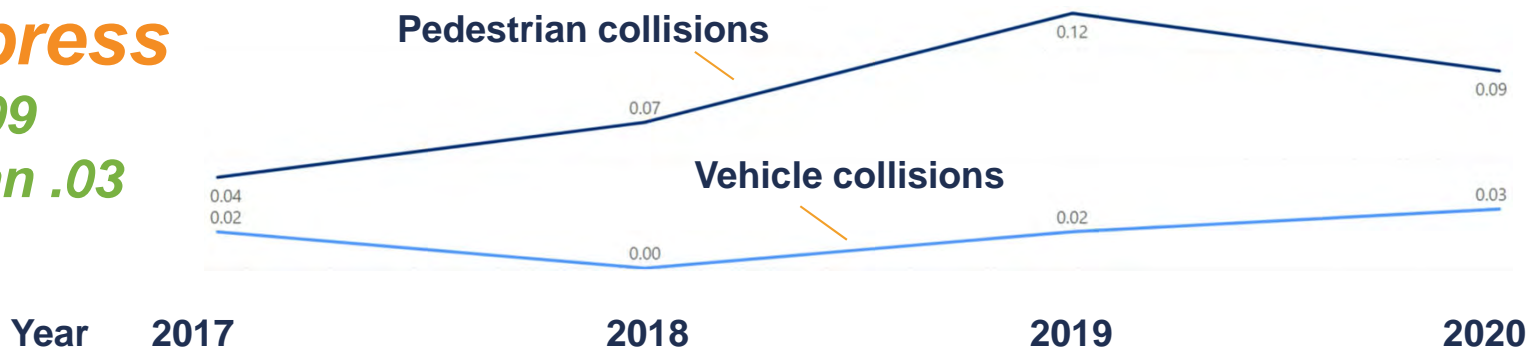
Pedestrians .00



2020 Collisions, rate per 100,000 VRMs

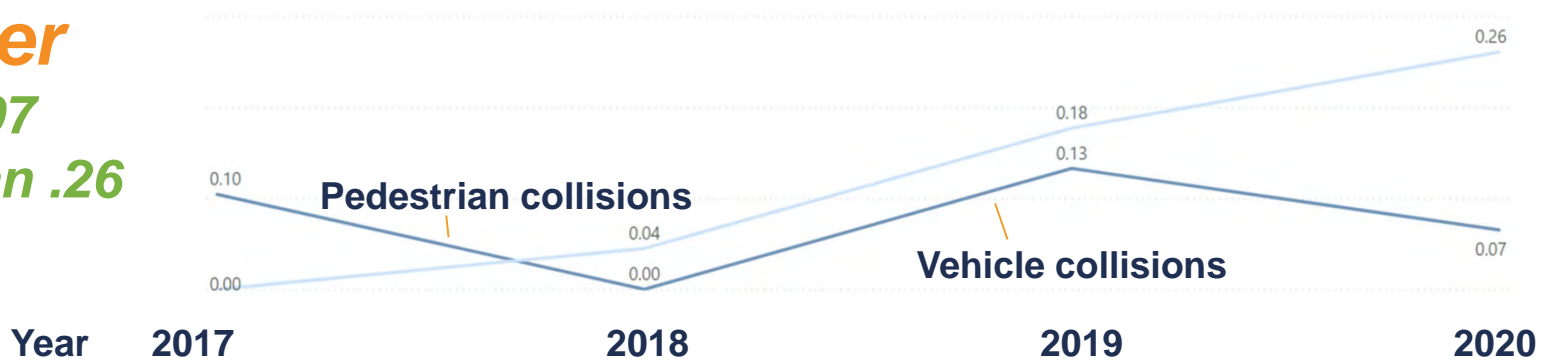
ST Express

Vehicle .09
Pedestrian .03



Sounder

Vehicle .07
Pedestrian .26



A photograph of a construction site with a blue tint. Two workers in safety vests and hard hats are handling large metal coils. The text "Employee and Construction Safety" is overlaid in white, italicized font.

***Employee and
Construction Safety***

Employee Safety COVID-19

2020 measures

- Approx. 91% of employees working remotely
(Only ~100 "essential worker" employees reporting)
- Restricted campus access
- Safety training required to access campus

2021 additional measures

- Self-screen before entering
- Back-to-Work messaging

ST/Contractor COVID-19 Data

	2020	2021
Percentage of reported cases		
Sound Transit	1.6%	0.5%
Contractor staff	3.4%	1.9%
Tri-county area cases	165,000	10,400
Current COVID status		
Allowed office capacity	Essential only	50% (25% Pierce)
Face covering	Mandatory	Mandatory
Distancing	6 feet	6 feet
Vaccines	Essential only	Supply available

Construction Safety

COVID-19 management plans

- Required all ST contractors to submit COVID-19 management plans.
- Plans reviewed and accepted with criteria derived from DOSH, L&I and CDC.
- Verified contractor training and availability of required hygiene stations, PPE and ability to maintain 6-ft. separation.
- Conducting field surveys to assess compliance with submitted plans.
- Construction trades and crafts eligible for vaccinations (March 31).



Construction and Employee Safety Data

WA State and National comparative

	2019		2020	
	Sound Transit	Contractor	Sound Transit	Contractor
Recordable Injury Rate (RIR)				
	0.37	2.42	0.10	1.89
WA State	2.9	6.0	2.9	5.7
National	4.5	3.0	4.5	2.8
Lost Time Injuries				
	0.37	0.57	0.00	0.20
WA State	1.9	1.9	1.9	2.8
National	3.0	1.2	3.0	2.5

A blue-tinted photograph of a server room aisle. The floor is made of square tiles, and a person's face is superimposed on the tiles in the center of the aisle. The word "Questions?" is written in white, italicized font across the middle of the image.

Questions?

Thank you.



 [soundtransit.org](https://www.soundtransit.org)

